

SUPER
ROCKER

$$\text{Radius} = (l - e)^2 / (20 * (s + t - 2p))$$

$$LH = LW * 0.1$$

$$L1 = (LTOT - LW) * 0.8$$

$$L2 = LW * 0.9$$

$$LS = L1 + LW$$

$$L = L1 + L2$$

$$R = \frac{L2}{2000 * (S + H - 2 * W)}$$

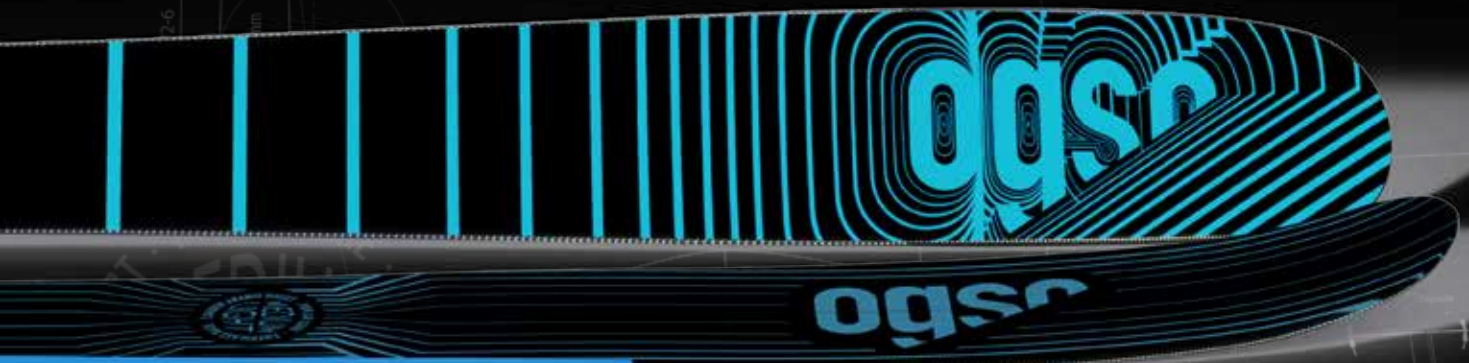
ULTRA
LIGHT
FIBERGLASS STABILIZER - PAULOWNIA CORE - CARBON & ARMIED GLASS

NEOTERIC
CAMBER

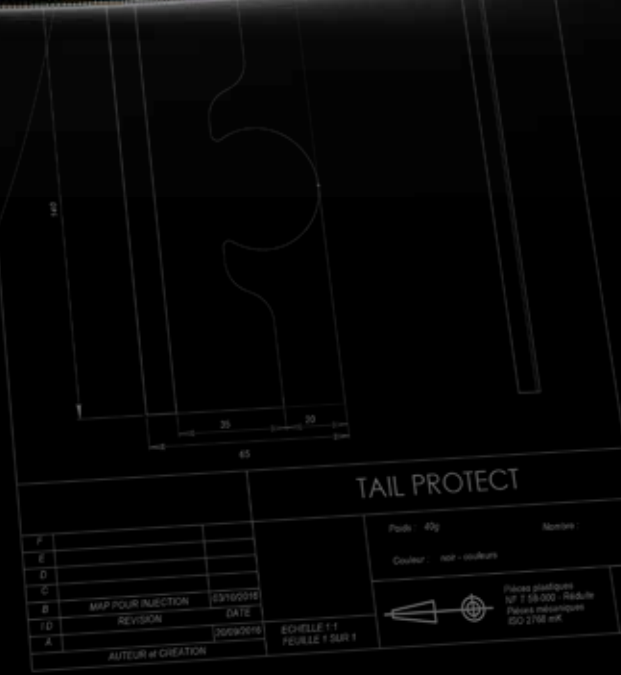
DIABLE 100

SUPER ROCKER

FIBERGLASS MEDIUM LIGHT



SCHWARTZTOR
* MARINELLI *
- DIABLE
COUTURIER...



Scan to watch on

HIT ME WITH YOUR BEST SHOT

"Pat Benatar"

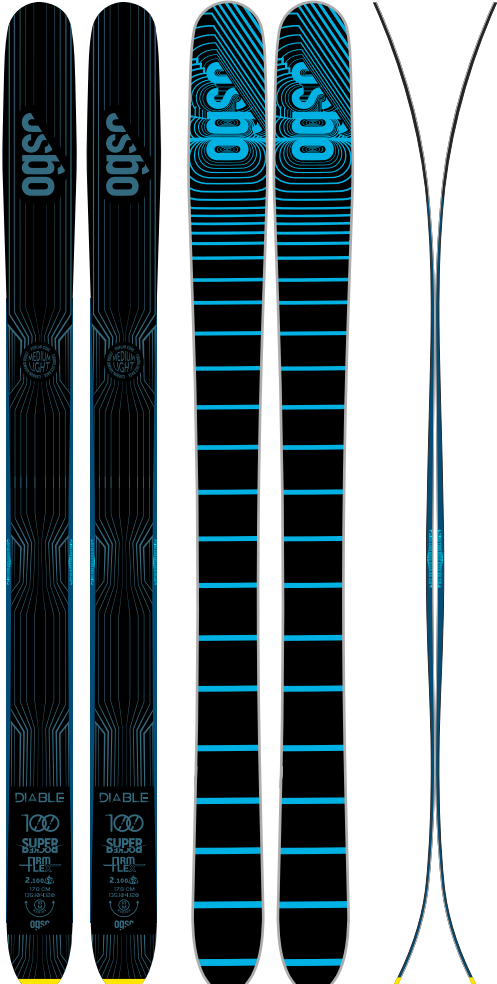


MOUNTAIN ESSENTIALS

DIABLE 100

SUPER ROCKER

FIBERGLASS MEDIUM LIGHT



HIT ME WITH YOUR BEST SHOT
"Pat Benatar"

[SOLID TOURING]

DIABLE is a fun, MEDIUMLIGHT FREETOURING ski that shreds the backcountry with easy and effortless turns in all conditions and smashes laps at your favorite resort.

If you're looking for a ski that can rage in the backcountry, rule the resort and float in powder, then DIABLE is the ski for you.

An ISOSPORT 7510 base is a racing standard base that provides fast glide and outstanding durability.

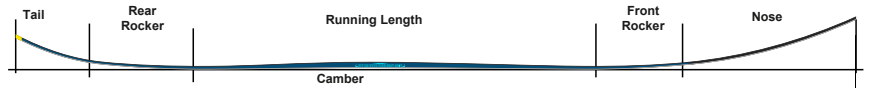


SUPER ROCKER

FIRM FLEX

SIZE: [162] [170] [178] [186] [194]

SKI PROFILE SHAPE



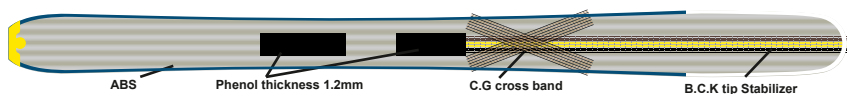
DIABLE TOP-SHEET



FIBER GLASS 60-24



POPLAR WOOD CORE



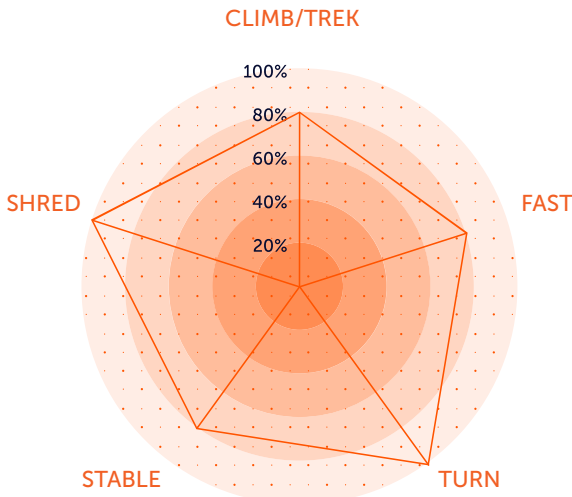
FIBER GLASS 60-24

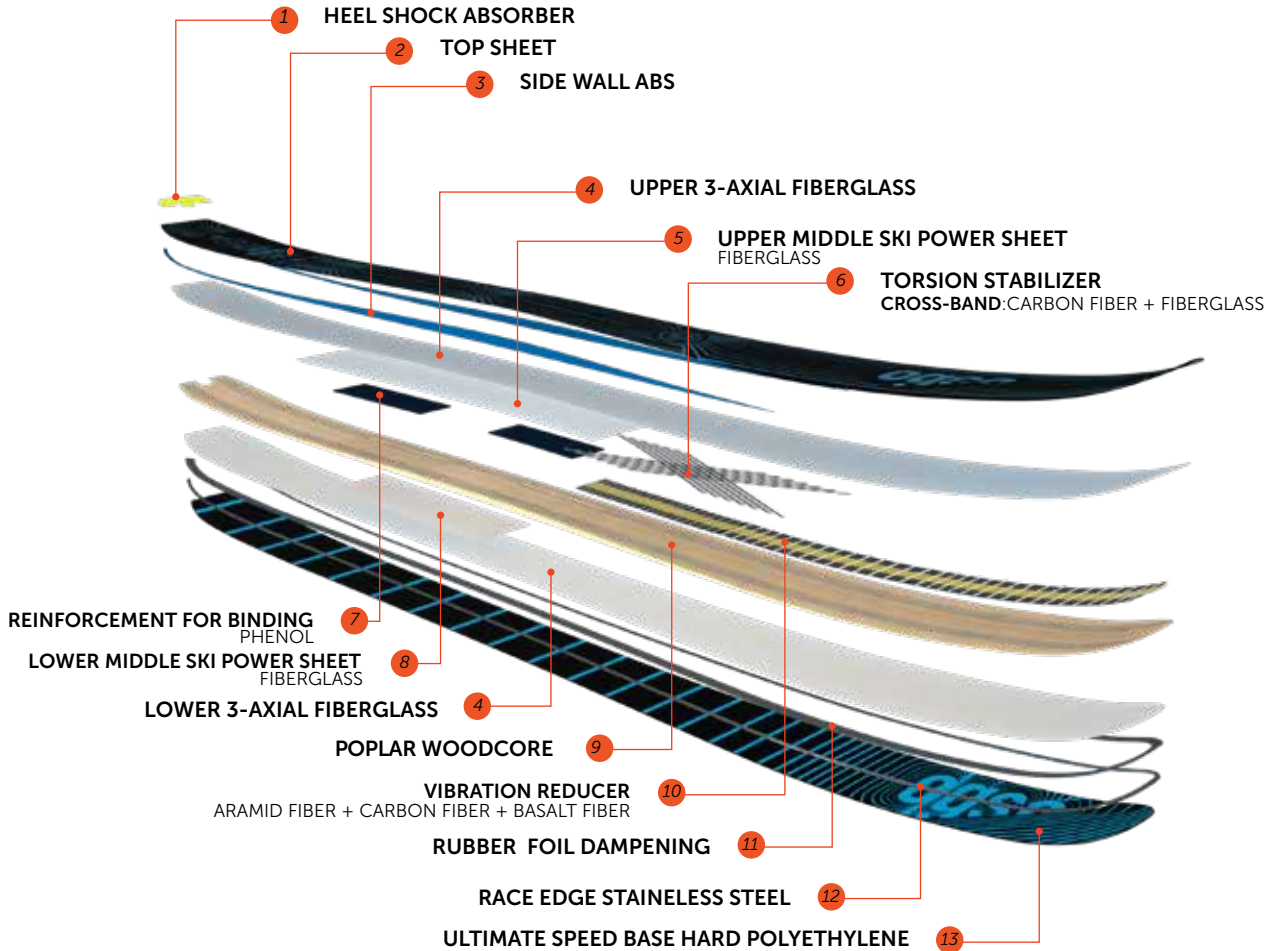


DIABLE BASE-SHEET IS 7500



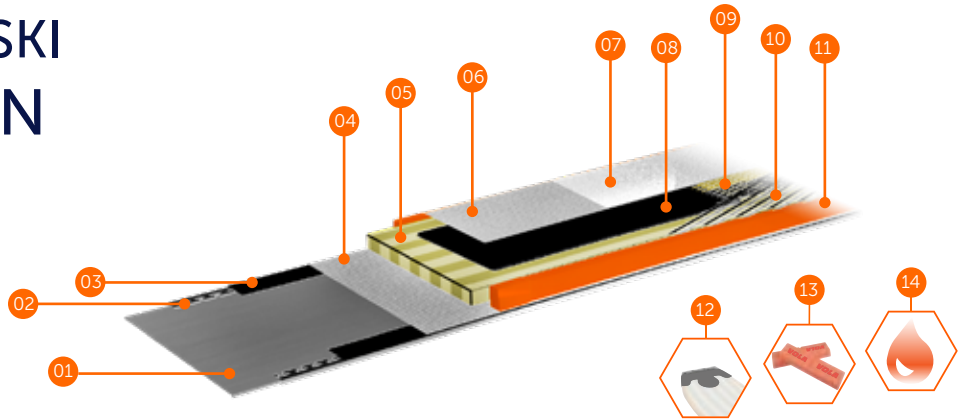
Base thickness 1.2mm





Diable 100 SUPER ROCKER MEDIUM LIGHT					
Commercial Length (cm)	162	170	178	186	194
A: Flat Length (cm)	161,65	169,9	177,25	185,8	192,85
B: Air Length (cm)	161,2	169,4	176,7	185,2	192,2
Surface Area (cm²)	1782	1910	2023	2155	2302
Weight (kg)	1,8	1,95	2,1	2,25	2,4
Width Measures: Front, Middle, Back (mm)	130,100,117	133,102,119	135,104,120	138,106,122	142,108,125
Radius Average (m)	16	17	20	22	24
Radius Center (m)	14	15	18	20	21
Nose Rise Length (mm)	315	335	350	365	380
Tail Length (mm)	165	170	180	190	200
Front Rocker Length (mm)	210	220	230	240	250
Back Rocker Length (mm)	210	220	230	240	250
Running Length (mm)	720	755	790	825	860
Camber Height (mm)	3	3	3	3	3
Nose Height (mm)	93	93	93	93	93
Tail Height (mm)	57	57	57	57	57
E: Middle Boot From Tail including tail protection (mm)	710	740	775	810	845

MEDIUM LIGHT SKI COMPOSITION



01 BASE SHEET IS 7500

www.isosport.com

- Transparent.
- Made of premium crosslink polyethylene.
- Good abrasion resistance, very low stress level.
- Modified with wax for better gliding.

02 STAINLESS EDGE

www.waelzholz.com

- The steel racing edge provides smooth flex and minimal friction resistance.
 The main characteristics of stainless steel are as follows:
- High durability
 - Good ductility
 - Optimal gliding behaviour
 - Improved adhesion
 - High mechanical strength

03 RUBBER

www.haberkorn.ch

- Thin rubber used between the metal edge and fiberglass layers to minimize shearing-induced delamination. Equalising temperature-related expansion and differing stress-strain coefficients.
 Suitability for use over a wide temperature range.
 Vibration damping up to the point of component

04 FIBERGLASS 60-24

www.pgtext.cn

- E-glass fibre products are particularly resistant to abrasion and vibration and have excellent flexibility. The glass thread has a higher specific resistance (tensile strength/volumetric mass) than that of steel. This feature makes it possible to develop glass threads that reinforce high performance composites.
 The main characteristics of Fiberglass are as follows:
- Good resistance to abrasion and vibrations
 - Rot-resistant
 - Excellent dielectric strength
 - Excellent dimensional stability

05 POPLAR WOOD CORE

FSC certified forest management.
 Poplar wood is tough, with high mechanical strength and strong corrosion resistance; moderate hardness and strength.
 Poplar woodcore have several advantages such as:

- Very good ratio of weight, flexibility, stability and torsion.
- Low weight when compared to other cores
- Flexible application possibilities.



07 TOP SHEET 5275

www.isosport.com

- The main characteristics of polyamides are :
- Resistance to aging over long periods.
 - High mechanical strength and high rigidity.
 - Functional tenacity even at low temperatures.
 - Excellent dielectric properties.
 - Good resistance to abrasion.

08 PHENOL REINFORCEMENT FOR BINDING

www.isosport.com

In this material, the high-strength papers are impregnated with phenolic resins and compressed into sheets of durable, durable and reactive material. This material is characterized by its excellent mechanical properties to hold the screws in place.

09 VIBRATION & CRACKING REDUCER

BAND (basalt-fiber+carbon-fiber+aramid fiber)
www.chomarat.com

The unidirectional ribbon is composed from a carbon frame that surrounds a large basalt and kevlar fiber core in a continuous weft.

- The Carbon frame provides:**
- High stiffness
 - High tensile strength
 - Excellent impact resistance

- The Basalt & Kevlar core provides:**
- Excellent dielectric insulation
 - High modulus of elasticity
 - Excellent vibration damping

10 TORSION STABILIZER

CROSS-BAND (carbon fiber+fiberglass)
www.chomarat.com

- The ribbon is unidirectional carbon fiber with continuous weft. It is a light and open reinforcement.
- Narrow ribbons
 - Excellent alignment of fibers
 - Less crimped with good mechanical properties at 0°
 - Ensures the rigidity and stability of the parts

11 SIDE WALL ABS

www.isosport.com

Especially designed for winter sport applications. Charpy impact strength notched: +23 C°/-25C° ISO DUR ID1000-147

12 HEEL SHOCK ABSORBER

The material we use is ELASTOLLAN R1000 from BASF.
 Glass fibre reinforced thermoplastic Polyester-Polyurethane-Elastomer with exceptional properties, very high impact resistance, high modulus with at the same time elasticity, low coefficient of thermal expansion comparable with steel and aluminium.
 - Modulus of elasticity - tensile test : 1000MPa
 - Density : 1.36g/cm³
 - Hardness : 60 Shore D
 - Glass-fiber content : 20%
 - Tensile strength : 50MPa
 - Impact + notch strength : +23
 -30

Injected by Injection 74

www.polyurethanes.basf.com
www.injection74.com



13 VOLA WAX

www.vola.fr

Racing universal wax 500G orange. Ski wax improves the coefficient of friction performance under varying snow conditions.

Universal 500G designed to match with the varying properties of snow, including crystal type and size, and moisture content of the snow surface, which vary with temperature of the snow.

14 RESIN

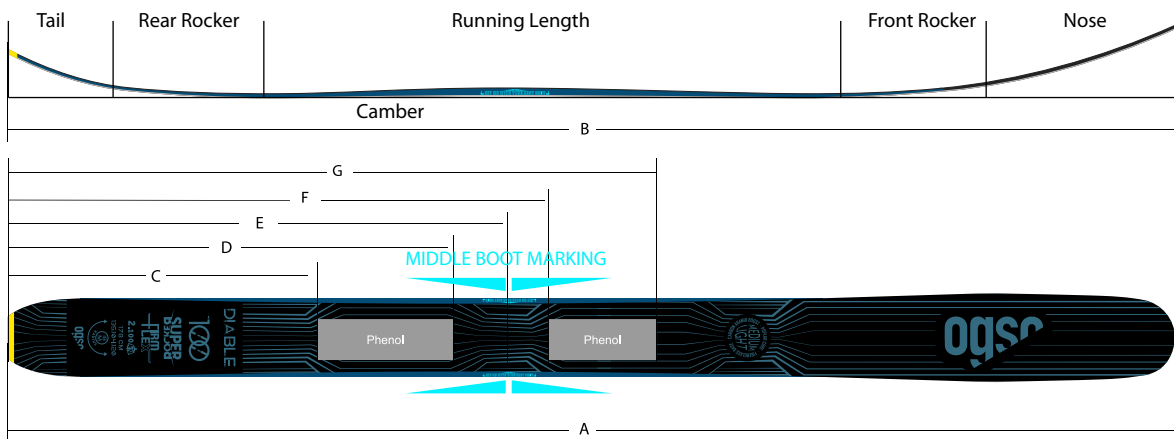
www.sicom.com

Bio Based resin is outcoming from the latest innovations in bio-based chemistry. Bio Based resin is produced with a high content of carbon from plant origin.
 The bio-based Carbon content of our supplier's system is certified by an independent laboratory using Carbon 14 measurements (ASTM D6866 or XP CEN/TS 16640)
 This is a significant technological advance on the following points: Clarity, colour, performances and guarantees of industrial tonnages availability.

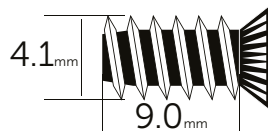


Diable 100 SUPER ROCKER MEDIUM LIGHT

Commercial Length (cm)	162	170	178	186	194
A: Flat Length (cm)	161,65	169,9	177,25	185,8	192,85
B: Air Length (cm)	161,2	169,4	176,7	185,2	192,2
C: Start rear phenol	430	460	495	530	565
D: End rear phenol	630	660	695	730	765
E: Middle Boot From Tail including tail protection (mm)	710	740	775	810	845
F: Start front phenol	770	800	835	870	905
G: End front phenol	930	960	995	1030	1065



SCREWS RECOMMENDED MEDIUM LIGHT SERIES



SHARPENED STEEL EDGE AREA

